



# MONTHLY MEMBERSHIP PROGRESS REPORT

District C 2

Results as of: 05/31/2019

GMT: GORDON ZIEGLER

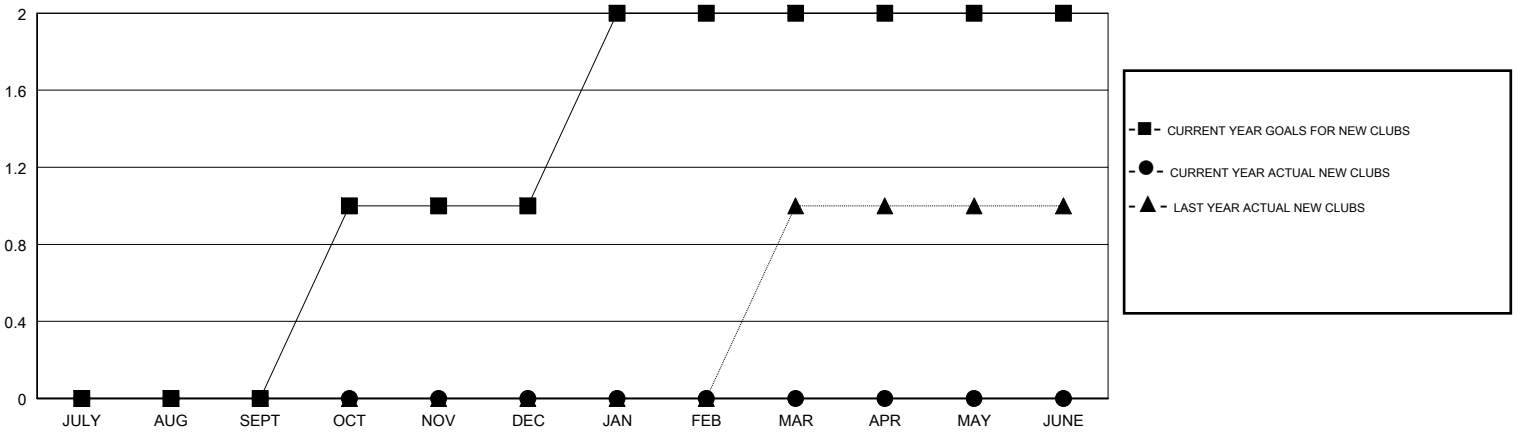
LOCATION ALBERTA

GMT CA

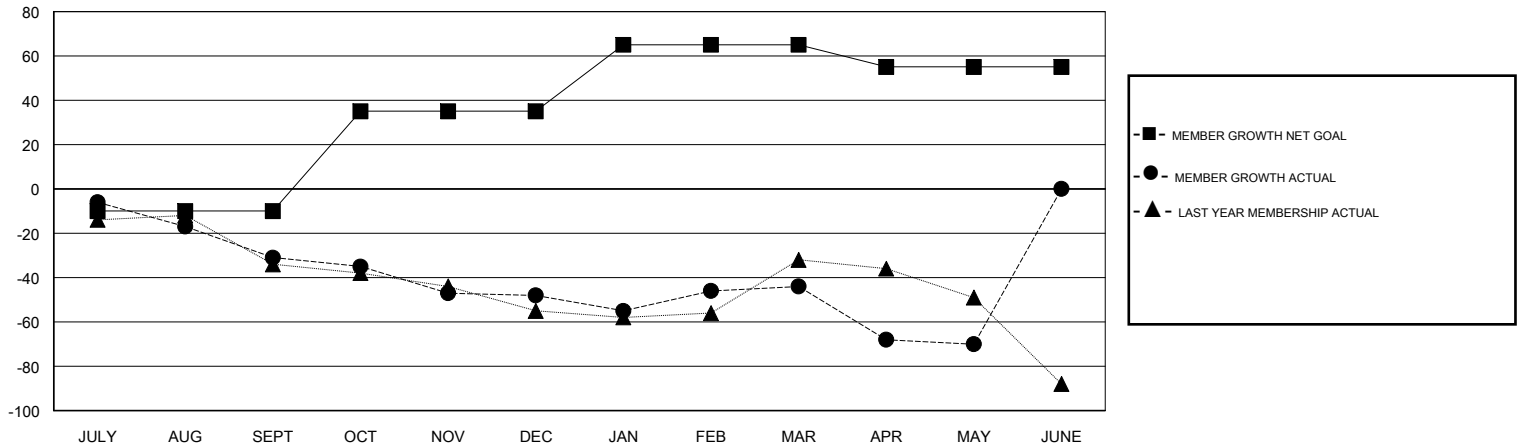
Clubs			
RESULTS FOR 2018-2019			
QUARTER	NEW CLUB GOAL	NEW CLUBS	DROPPED CLUBS
JULY/AUG/SEPT	0	0	0
OCT/NOV/DEC	1	0	0
JAN/FEB/MAR	1	0	0
APR/MAY/JUNE	0	0	1

Members			
RESULTS FOR 2018-2019			
QUARTER	MEMBER GROWTH NET GOAL	MEMBER GROWTH ACTUAL	DROPPED MEMBERS ACTUAL (including transfers)
JULY/AUG/SEPT	-10	26	54
OCT/NOV/DEC	45	45	56
JAN/FEB/MAR	30	67	51
APR/MAY/JUNE	-10	19	44

GOALS AND ACTUAL NEW CLUBS CUMULATIVE



GOALS AND ACTUAL MEMBERS CUMULATIVE



DROPPED CLUBS: 1
------------------

50 CLUBS OF 90 ADDED 1 OR MORE NEW MEMBERS

GENDER DISTRIBUTION	
MALE	1,548 (74.46%)
FEMALE	531 (25.54%)
Women Percentage Fiscal Year Goal: 30%	

DROPPED MEMBERS	
DECEASED	28
CLUB CANCELLED	27
OTHER	150
<b>TOTAL</b>	<b>205</b>

[CLICK HERE FOR CUMULATIVE MEMBERSHIP DATA](#)

TOTAL FAMILY UNIT MEMBERS	306
FAMILY MEMBERS PAYING HALF DUES	156